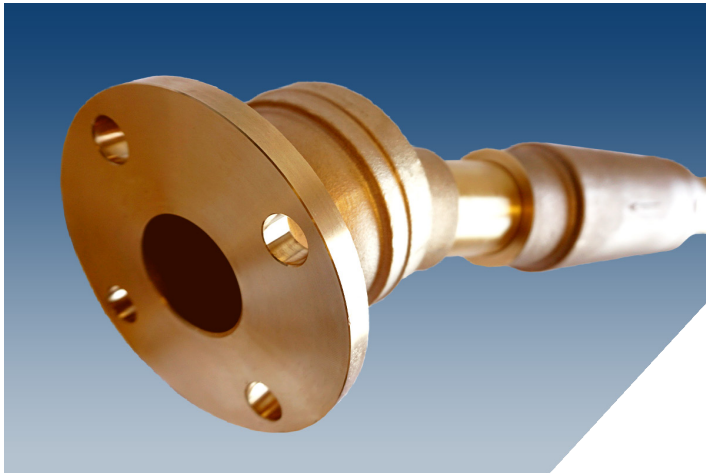


2 Inch Force Balanced FLEX-TEND®

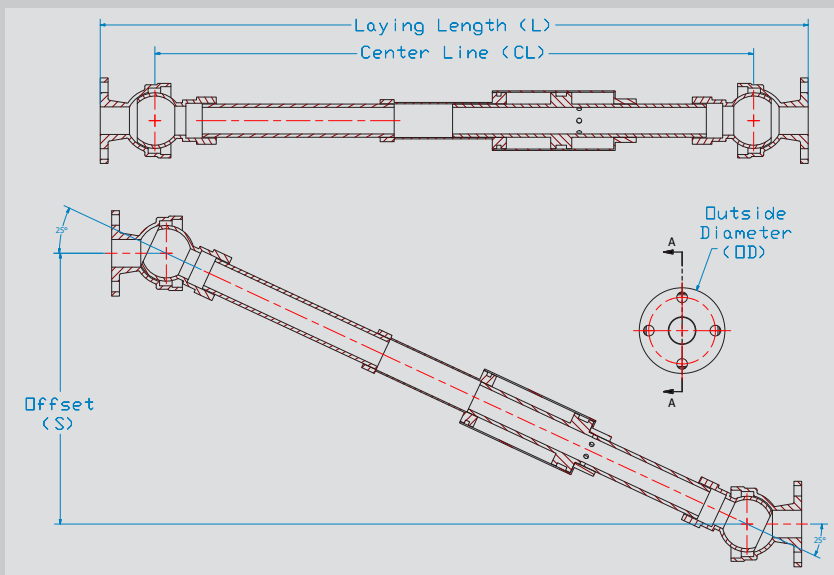
Force Balanced Flexible Expansion Joint



Features and Applications:

- Size 2 inch rated at 150 PSI
- For Ductile Iron, Steel, PVC or HDPE pipe
- Expansion unit will NOT impart a thrust force while under internal pressure
- Designed to give Deflection and or Expansion/Contraction needs to protect pipeline systems from shear. Refer to submittal drawings for "offset" capability
- Constructed of Bronze / Stainless Steel
- Up to 20° Deflection per ball
- Each unit tested to 150psi rated working pressure prior to shipment
- Due to the design of the seals, no periodic maintenance is required
- Flange outlets conform to the dimensional requirements of ANSI/AWWA C110/A21.10 (class 150), ANSI BIC.5, class 150
- NOT for use on pipelines containing solids and debris.
- Product of Japan

FLEX-TEND Force Balanced Submittal Drawing



For use on water pipelines subject to hydrostatic pressure and tested in accordance with either AWWA C600, C605, or ASTM D2774.

In accordance with AWWA C600, all air must be expelled from the line before hydrostatic testing.

EBAA IRON Sales, Inc.

P.O. Box 857, Eastland, TX 76448

Tel: (254) 629-1731

Fax: (254) 629-8931

(800) 433-1716 within US and Canada

contact@ebaa.com

www.ebaa.com

Flange by Flange								
Nominal Pipe Size	OD	D*	E**	CL	S	Series Number	L	Weight (lbs)
2	6.20	25°	6.5	44.7	19.7	4402F20B	50.5 (±3)	48.4

NOTE: Dimensions are in inches, and are subject to change without notice.
 *Deflection Angle is per ball.
 **Maximum expansion.